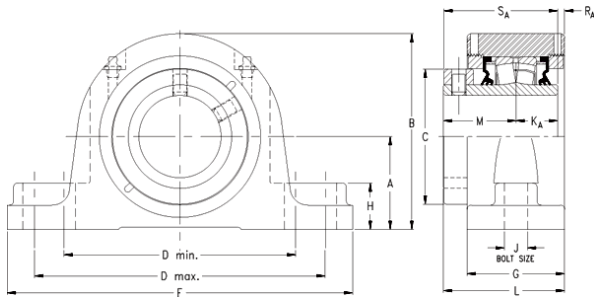




HMSA BEARING MANUFACTURING LIMITED



timken QASN10A050S Solid Block/Spherical Roller Bearing Housed Units-Single Concentric Two-Bolt Pillow Block

Bearing No. QASN10A050S

QASN10A050S Bearing 2D drawings and 3D CAD models

Engineering Group	Mounted Bearing
Shaft Size	50 mm
Shaft Size Type	Metric
Full Timken Part Number	QASN10A050SB
Locking Style	Single Concentric
Weight	28 lb
Housing Style	Two-Bolt Pillow Block
UPC Code	0883450351744
Dimension A	2.76 in
Dimension B	5.35 in
Dimension C	2.87 in
Dimension D Max	8.50 in
Dimension D Min	7.20 in
Dimension F	10.00 in
Dimension G	2.680 in
Dimension H	0.98 in
Dimension J (Bolt Size)	0.625 in
Dimension KA	1 in
Dimension L	3.23 in
Dimension M	1.89 in
Dimension RA	0.35 in
Dimension SA	2.87 in
C0 - Static Load	26600 lb
C - Dynamic Load (Basic)	26300 lb
e - Geometry Factor	0.24



HMSA BEARING MANUFACTURING LIMITED

Y1 - Geometry Factor	2.84
Y2 - Geometry Factor	4.23
Oil Lubrication - M/N Seal	2400 rpm
Oil Lubrication - T Seal	4200 rpm
Oil Lubrication - B/C/O Seal	1800 rpm
Grease Lubrication - M/N Seal	2400 rpm
Grease Lubrication - T Seal	3550 rpm
Grease Lubrication - B/C/O Seal	1800 rpm
Float	0.050 in
Shaft Tolerance	0.0015 in
Eng Internal Radial Clearance - Min	0.0016
Eng Internal Radial Clearance - Max	0.0026
Pre Install Clearance Min	0.0016 in
Pre Install Clearance Max	0.0026 in