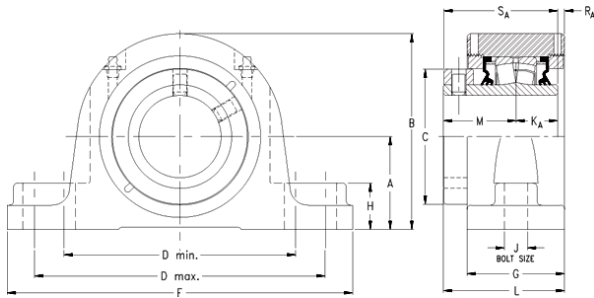




HMSA BEARING MANUFACTURING LIMITED



timken QASN11A203S Solid Block/Spherical Roller Bearing Housed Units-Single Concentric Two-Bolt Pillow Block

Bearing No. QASN11A203S

QASN11A203S Bearing 2D drawings and 3D CAD models

Engineering Group	Mounted Bearing
Shaft Size	2-3/16 in
Shaft Size Type	Imperial
Full Timken Part Number	QASN11A203SB
Locking Style	Single Concentric
Weight	29 lb
Housing Style	Two-Bolt Pillow Block
UPC Code	0883450353205
Dimension A	2.76 in
Dimension B	5.55 in
Dimension C	3.27 in
Dimension D Max	8.50 in
Dimension D Min	7.20 in
Dimension F	10.00 in
Dimension G	2.680 in
Dimension H	0.98 in
Dimension J (Bolt Size)	0.625 in
Dimension KA	1.14 in
Dimension L	3.35 in
Dimension M	2.01 in
Dimension RA	0.2 in
Dimension SA	3.15 in
C0 - Static Load	31900 lb
C - Dynamic Load (Basic)	31400 lb
e - Geometry Factor	0.23



HMSA BEARING MANUFACTURING LIMITED

Y1 - Geometry Factor	2.95
Y2 - Geometry Factor	4.40
Oil Lubrication - M/N Seal	2200 rpm
Oil Lubrication - T Seal	3800 rpm
Oil Lubrication - B/C/O Seal	1600 rpm
Grease Lubrication - M/N Seal	2200 rpm
Grease Lubrication - T Seal	3200 rpm
Grease Lubrication - B/C/O Seal	1600 rpm
Float	0.050 in
Shaft Tolerance	0.0015 in
Eng Internal Radial Clearance - Min	0.0016
Eng Internal Radial Clearance - Max	0.0026
Pre Install Clearance Min	0.0016 in
Pre Install Clearance Max	0.0026 in